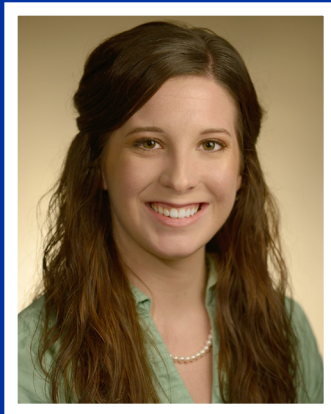




Department of
Physiology

GRADUATE STUDENT DEFENSE SEMINAR



Allison Steele

Ph.D. Candidate

Mentor: Hiroshi Saito, Ph.D.

***NEW INSIGHTS INTO POST-SEPSIS
MUSCLE WEAKNESS ELUCIDATED USING A
NOVEL ANIMAL MODEL***

Wednesday, November 22, 2017

Seminar

10:00 am

Med Sci MN 463

Celebration*

2:30 pm

Med Sci MS 505

*pending approval from dissertation committee